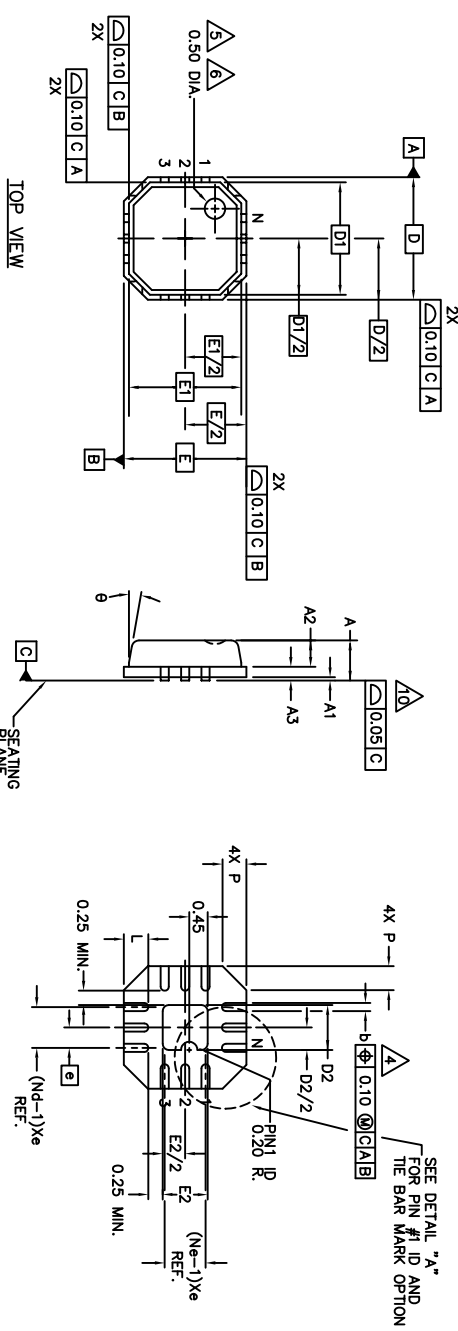
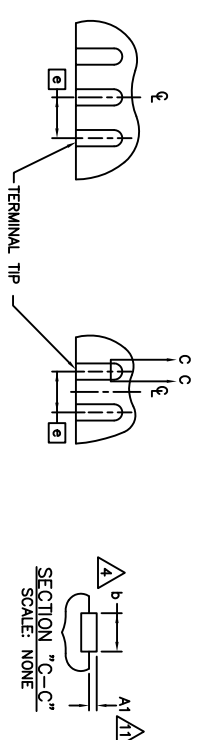


HIGH DENSITY LEADFRAME



NO.	DESCRIPTION	QTY.	UNIT	REMARKS
01	LEADFRAME FOR PIN #1 AND PIN #2	500	PCS	
02	LEADFRAME FOR PIN #3 AND PIN #4	500	PCS	
03	LEADFRAME FOR PIN #5 AND PIN #6	500	PCS	
04	LEADFRAME FOR PIN #7 AND PIN #8	500	PCS	
05	LEADFRAME FOR PIN #9 AND PIN #10	500	PCS	
06	LEADFRAME FOR PIN #11 AND PIN #12	500	PCS	
07	LEADFRAME FOR PIN #13 AND PIN #14	500	PCS	
08	LEADFRAME FOR PIN #15 AND PIN #16	500	PCS	
09	LEADFRAME FOR PIN #17 AND PIN #18	500	PCS	
10	LEADFRAME FOR PIN #19 AND PIN #20	500	PCS	
11	LEADFRAME FOR PIN #21 AND PIN #22	500	PCS	
12	LEADFRAME FOR PIN #23 AND PIN #24	500	PCS	
13	LEADFRAME FOR PIN #25 AND PIN #26	500	PCS	
14	LEADFRAME FOR PIN #27 AND PIN #28	500	PCS	
15	LEADFRAME FOR PIN #29 AND PIN #30	500	PCS	
16	LEADFRAME FOR PIN #31 AND PIN #32	500	PCS	
17	LEADFRAME FOR PIN #33 AND PIN #34	500	PCS	
18	LEADFRAME FOR PIN #35 AND PIN #36	500	PCS	
19	LEADFRAME FOR PIN #37 AND PIN #38	500	PCS	
20	LEADFRAME FOR PIN #39 AND PIN #40	500	PCS	
21	LEADFRAME FOR PIN #41 AND PIN #42	500	PCS	
22	LEADFRAME FOR PIN #43 AND PIN #44	500	PCS	
23	LEADFRAME FOR PIN #45 AND PIN #46	500	PCS	
24	LEADFRAME FOR PIN #47 AND PIN #48	500	PCS	
25	LEADFRAME FOR PIN #49 AND PIN #50	500	PCS	
26	LEADFRAME FOR PIN #51 AND PIN #52	500	PCS	
27	LEADFRAME FOR PIN #53 AND PIN #54	500	PCS	
28	LEADFRAME FOR PIN #55 AND PIN #56	500	PCS	
29	LEADFRAME FOR PIN #57 AND PIN #58	500	PCS	
30	LEADFRAME FOR PIN #59 AND PIN #60	500	PCS	
31	LEADFRAME FOR PIN #61 AND PIN #62	500	PCS	
32	LEADFRAME FOR PIN #63 AND PIN #64	500	PCS	
33	LEADFRAME FOR PIN #65 AND PIN #66	500	PCS	
34	LEADFRAME FOR PIN #67 AND PIN #68	500	PCS	
35	LEADFRAME FOR PIN #69 AND PIN #70	500	PCS	
36	LEADFRAME FOR PIN #71 AND PIN #72	500	PCS	
37	LEADFRAME FOR PIN #73 AND PIN #74	500	PCS	
38	LEADFRAME FOR PIN #75 AND PIN #76	500	PCS	
39	LEADFRAME FOR PIN #77 AND PIN #78	500	PCS	
40	LEADFRAME FOR PIN #79 AND PIN #80	500	PCS	
41	LEADFRAME FOR PIN #81 AND PIN #82	500	PCS	
42	LEADFRAME FOR PIN #83 AND PIN #84	500	PCS	
43	LEADFRAME FOR PIN #85 AND PIN #86	500	PCS	
44	LEADFRAME FOR PIN #87 AND PIN #88	500	PCS	
45	LEADFRAME FOR PIN #89 AND PIN #90	500	PCS	
46	LEADFRAME FOR PIN #91 AND PIN #92	500	PCS	
47	LEADFRAME FOR PIN #93 AND PIN #94	500	PCS	
48	LEADFRAME FOR PIN #95 AND PIN #96	500	PCS	
49	LEADFRAME FOR PIN #97 AND PIN #98	500	PCS	
50	LEADFRAME FOR PIN #99 AND PIN #100	500	PCS	

SEE DETAIL "A"
FOR PIN #1 ID AND
THE BAR MARK OPTION



SECTION "C-C"
SCALE: NONE

FOR ODD TERMINAL/SIDE

FOR EVEN TERMINAL/SIDE

PACKAGE OUTLINE, MLF2, 3 X 3 mm BODY

DATE	11/20/00	REV	01
DESIGNED BY	SS JANG	CHECKED BY	SS JANG
DATE	11/20/00	REV	01
DESIGNED BY	SS JANG	CHECKED BY	SS JANG
DATE	11/20/00	REV	01
DESIGNED BY	SS JANG	CHECKED BY	SS JANG

1 OF 4