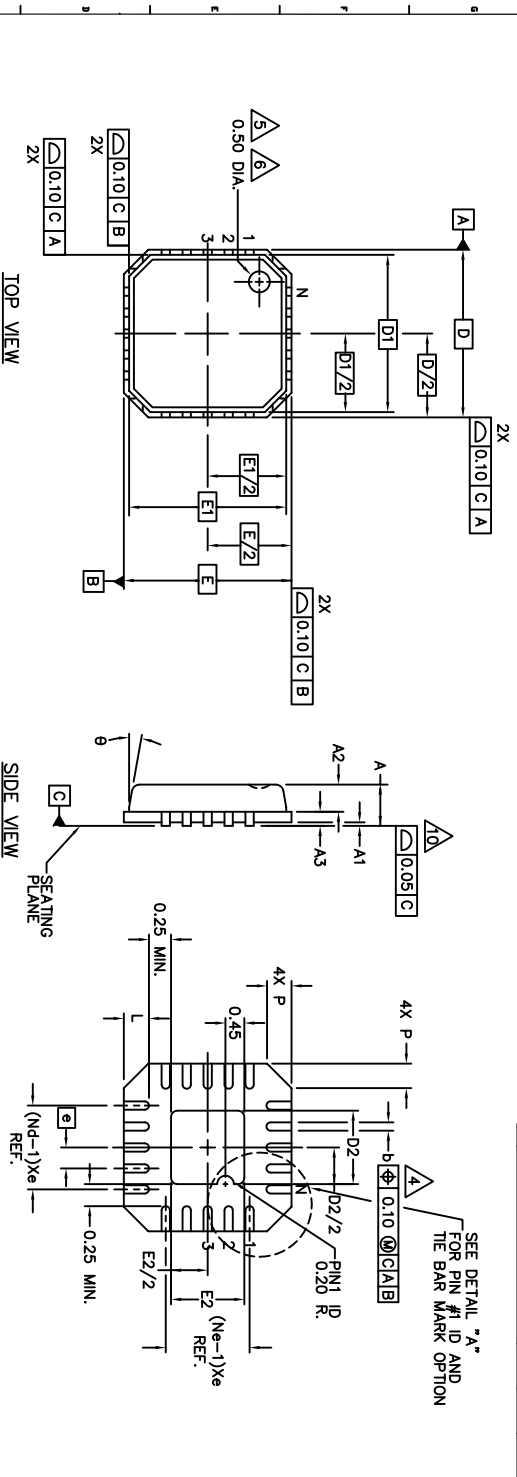
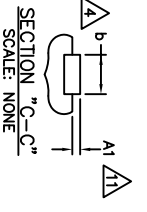
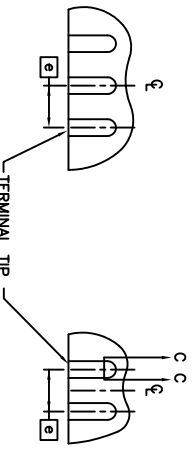


# HIGH DENSITY LEADFRAME

NO.	DESCRIPTION	QTY	UNIT	REMARKS
01	WAFER, RELATIVE PER DCM PARTNO. 321	321	SAU	SAU
02	WAFER, RELATIVE PER DCM PARTNO. 322	322	SAU	SAU
03	WAFER, RELATIVE PER DCM PARTNO. 323	323	SAU	SAU
04	WAFER, RELATIVE PER DCM PARTNO. 324	324	SAU	SAU
05	WAFER, RELATIVE PER DCM PARTNO. 325	325	SAU	SAU
06	WAFER, RELATIVE PER DCM PARTNO. 326	326	SAU	SAU
07	WAFER, RELATIVE PER DCM PARTNO. 327	327	SAU	SAU
08	WAFER, RELATIVE PER DCM PARTNO. 328	328	SAU	SAU
09	WAFER, RELATIVE PER DCM PARTNO. 329	329	SAU	SAU
10	WAFER, RELATIVE PER DCM PARTNO. 330	330	SAU	SAU
11	WAFER, RELATIVE PER DCM PARTNO. 331	331	SAU	SAU
12	WAFER, RELATIVE PER DCM PARTNO. 332	332	SAU	SAU
13	WAFER, RELATIVE PER DCM PARTNO. 333	333	SAU	SAU
14	WAFER, RELATIVE PER DCM PARTNO. 334	334	SAU	SAU
15	WAFER, RELATIVE PER DCM PARTNO. 335	335	SAU	SAU
16	WAFER, RELATIVE PER DCM PARTNO. 336	336	SAU	SAU
17	WAFER, RELATIVE PER DCM PARTNO. 337	337	SAU	SAU
18	WAFER, RELATIVE PER DCM PARTNO. 338	338	SAU	SAU
19	WAFER, RELATIVE PER DCM PARTNO. 339	339	SAU	SAU
20	WAFER, RELATIVE PER DCM PARTNO. 340	340	SAU	SAU



SEE DETAIL "A"  
FOR PIN #1 ID AND  
THE BAR MARK OPTION



FOR ODD TERMINAL/SIDE

FOR EVEN TERMINAL/SIDE

<b>AMKOR</b> AMKOR TECHNOLOGIES, INC. 10000 W. BRIDGEWAY, SUITE 100 HOUSTON, TEXAS 77040-1000 TEL: 281-891-1000 FAX: 281-891-1001 WWW.AMKOR.COM		<b>AMM</b> AMM TECHNOLOGIES, INC. 10000 W. BRIDGEWAY, SUITE 100 HOUSTON, TEXAS 77040-1000 TEL: 281-891-1000 FAX: 281-891-1001 WWW.AMM.COM	
PART NO. 45250	REV. 07	TITLE PACKAGE OUTLINE, MLF2, 4 X 4 mm BODY	DATE 07